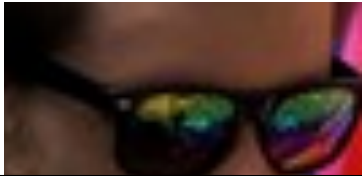


Lost Leader

Answers

The leaders who were dressed up in more than one different costume were: Alex W & Rhona



Number: 4



Number: 25



Number: 17



Number: 1



Number: 19



	Leader Name	What are they dressed up as?
1	Ruth B	Horse
2	Lukas	Angel
3	Alex W	Supergirl/man
4	Ian	Joseph (and his technicolour coat)
5	Annabel	Purple (evil) Minion
6	Leanne	Teddy Bear
7	Panda	Pirate
8	Uncle A	Juggling Bee
9	Claudia	Royalty
10	Clem	Queen of Hearts
11	Paul	Footballer
12 & 13	Cordy & Alison	Clowns
14	Jonny	Traffic Lights
15	Rosie	Spider
16	Heather	Bee Keeper
17	Lynne	Rapunzel
18	Alex W	Wonder Woman
19	Callum	Vet/Medical professional
20 & 21	Oli & Rhona	Lego mini figures
22	Ben	Knight
23	Rhona	Pikachu
24	Alex W	Mountain climber
25	Jon	Odlaw
26	Fiona	Bear
27	Evelyn	Weather Presenter
28	Alex B	Letterbox